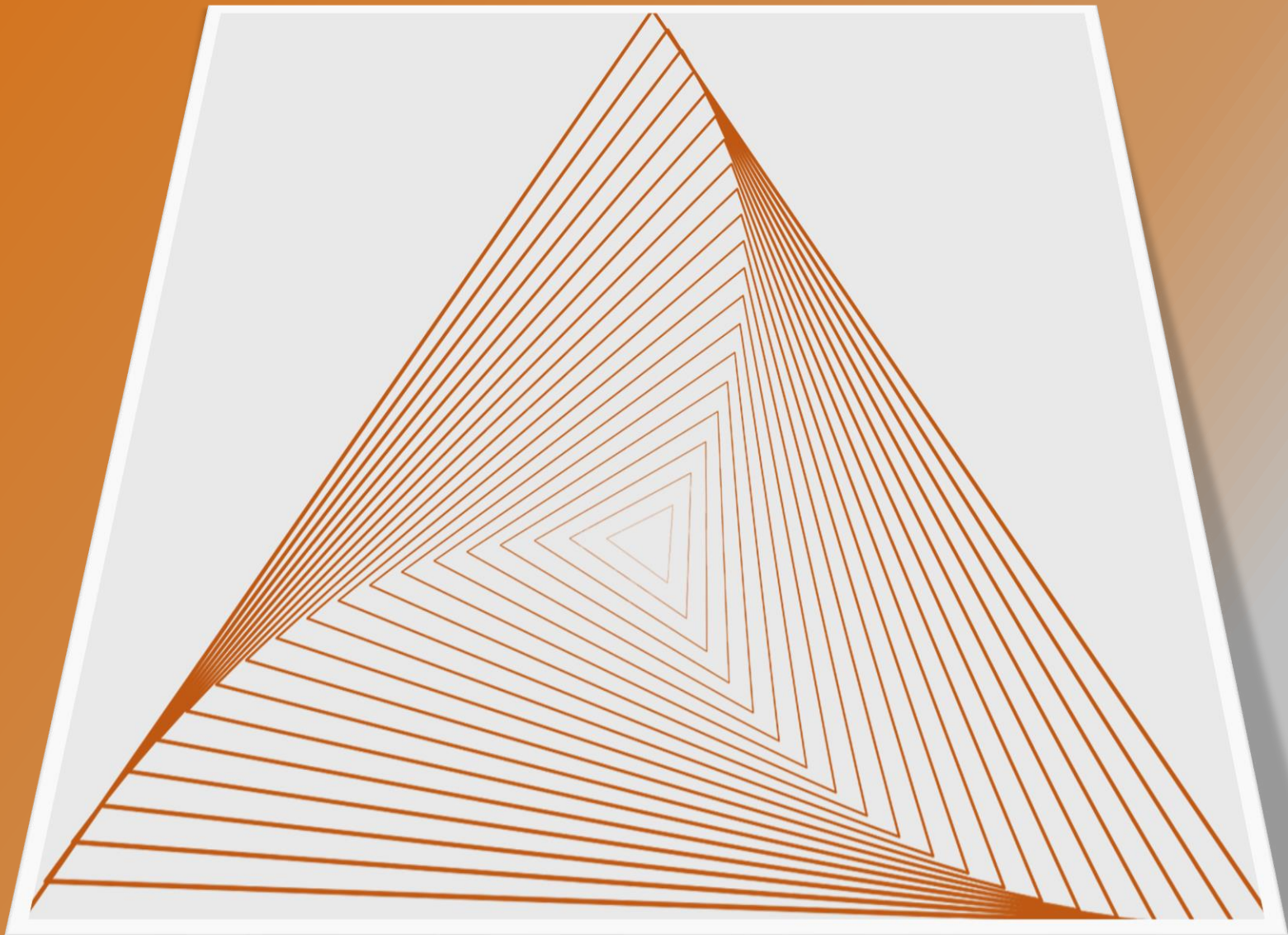
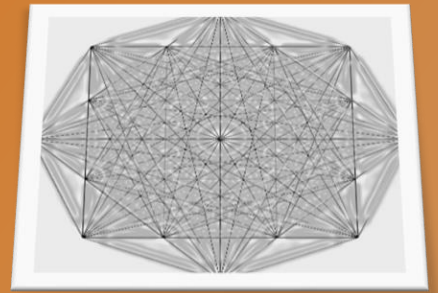


# Motif

Psychological Geometric Determination



# What is Motif?

---

Motif was created to help users better understand who they are as a person.

It is a system that focusses on their past and what challenges they've been faced with that made them who they are today.

Most importantly, it is a container of past events, situations, feelings, memories, and anything that the user deems important in their development.

# What is *Psychological Geometric Determination*?

---

A visual representation of the **psychological state(s)** an individual was in during critical points of the formation and development of **temperament(s), character trait(s), and personality(s)** of said person.

***Note: for this documentation, we will be focusing on psychological geometric determination or P.G.D., specifically.***

# *How does P.D.G work?*

---

1. We first run a psychological evaluation to determine a user's psyche equilibrium.
2. After the psychological evaluation, we determine the base geometric shape of an individual's motif.
3. Create a user's core.
4. As users provide more information the motif or p.g.d will grow naturally. After it progresses to the 4<sup>th</sup> - dimensional geometric determinate, we can then build their labyrinth.
5. Growth is infinite.

# Dimensions and P.G.D

---

In terms of Eonteous, dimension is defined as the information required to interpret a psychological geometrical determinate.

The lower the dimension the easier it is to interpret. But, with a higher dimension will require a more complex and deeper understanding to be able to interpret the p.g.d.

# Dimensions

---

1-Dimension: consists of an individual's basic temperament and nature. The core of who they are.

2-Dimension: consists of an individual's temperament, nature, and some basic character traits.

3-Dimension: is more in depth and has an individual's core, temperament, character traits, and personality.

4-Dimension: incorporates all dimensions 1-3. It now includes past events, situations, challenges, emotions, and experiences that shaped who they are. Memories are stored into what we call the "Labyrinth".

5-Dimension: consists of all dimensions 1-4, is expansionary.

# Terms and Definitions

---

Cell:

- a. Composite of thought processes and end results which are emotions, intellect, and survival instincts.
- b. Memory reserves.

Labyrinth: a complex interconnected network of cells that inhabit a person's 4<sup>th</sup> dimensional psychological geometric determinate and beyond.

Homeostasis: the balanced state of an individual's psychological and mental health.

Core: the total composition of an individual's likeness.

Time crystal: a period of encapsulated time.



Face: most recent physical, mental, or psychological activity that was impactful on a person's psychological geometric determinate.

Edge: an interconnected bridge between two or more faces on a person's psychological geometric determinate.

# Quick Recap

---

Motif is the system that was designed to summarize who and what someone is mentally, specifically, psychologically. It utilizes core concepts like psychological evaluations, probability behavior models, statistically consequential modeling, and many more. The point is to be able to quickly and accurately learn and understand who someone is based off their past.

Psychological geometric determination is the visual representation of a person's motif.

Now, let's look at a basic example.

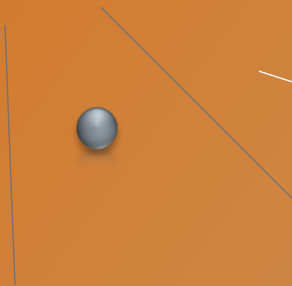
# Example

---



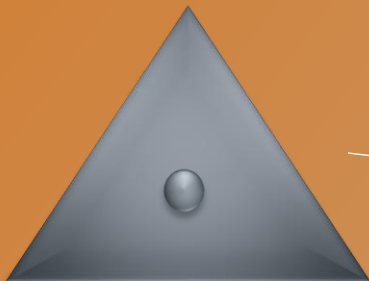
Core | 0 – dimension

After the evaluations and basic modeling have been completed, we create the “core”.



Core + Edges | 1 – dimension

We know that the user has a shape and responsive temperament. We can add some edges to get a more accurate picture of the p.g.d. In this case, the edges notify us that there is some type of aggressive tendencies towards friends, family, and strangers. We don't know why this happens yet.

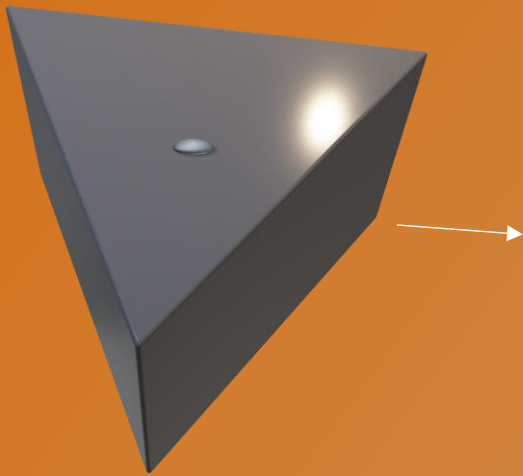


Core + Edges | 2 – dimension  
Triangle

Now that we have a good amount of information on the user, we can finalize their p.g.d. shape. We know a few things about the user. The user is more aggressive and on the offense in most confrontations.

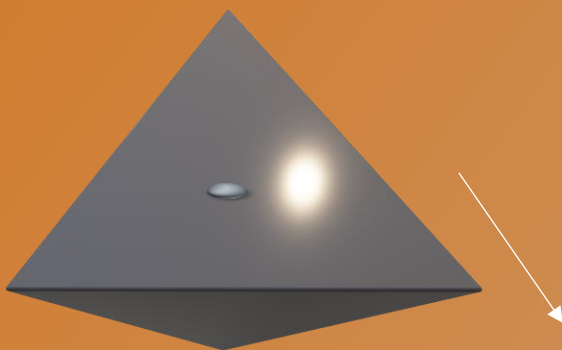
# Example Cont'd

---



Core + Edges + Faces | 3 – dimension  
Triangular Prism

We now have edges and faces that depict our user as someone who is brash, controlling, and prone to verbal altercations. Our user is in it's 3<sup>rd</sup> dimension. But much is still required to better understand our user's thought process.

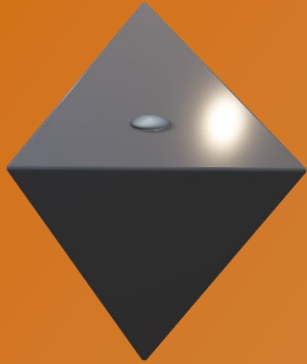


Core + Edges + Faces + Cells | 4 – dimension  
Tetrahedron  
5 – cells or more  
Time travel: Enabled (limited)

Now we know a good amount of information regarding the user. We know that the user's father was controlling and instructed our user to be as well. The cells depict multiple situations that reflect her father as a rough and through man. The mother is still unknown. With a limited number of cells, we can't understand the whole picture. There's something missing.

# Example Cont'd

---



With most of the information gathered, we learned that the user's father would physically harm our user. The father's hatred for the user is because our user reminded him of his wife who died giving birth. Our user internalized the hatred and subconsciously poured the sadness and frustration onto others. Our user has trauma but refuses to seek help.

Core + Edges + Faces + Cells | 5 – dimension  
Octahedron  
24 – cells or more  
Time travel: Enabled



Cell 13 detailed the horrific abuse our user has undergone.

Cell 13 | Upper Quadrant



Cell 27 depicts the conversation where the user's father admits that he hates our user because he believes the user killed its mother during birth.

Cell 27 | Lower Quadrant

# Example Conclusion

---

In conclusion, the above example is very simple. Most motifs will be very complex and will need to be interpreted by our experts. For now, we hope this example sheds some useful light on how motifs work.

Thank you for spending the time with us here and learning about motifs. If you have any comments or suggestions please feel free to email us at [eonteous@gmail.com](mailto:eonteous@gmail.com). We look forward to hearing from you.

