

The background features a complex, abstract pattern of colorful, wavy lines and a grid of small dots. The colors include shades of blue, green, yellow, orange, and red, creating a vibrant, multi-colored effect. The lines and dots are arranged in a way that suggests a dynamic, flowing structure, possibly representing data or a network.

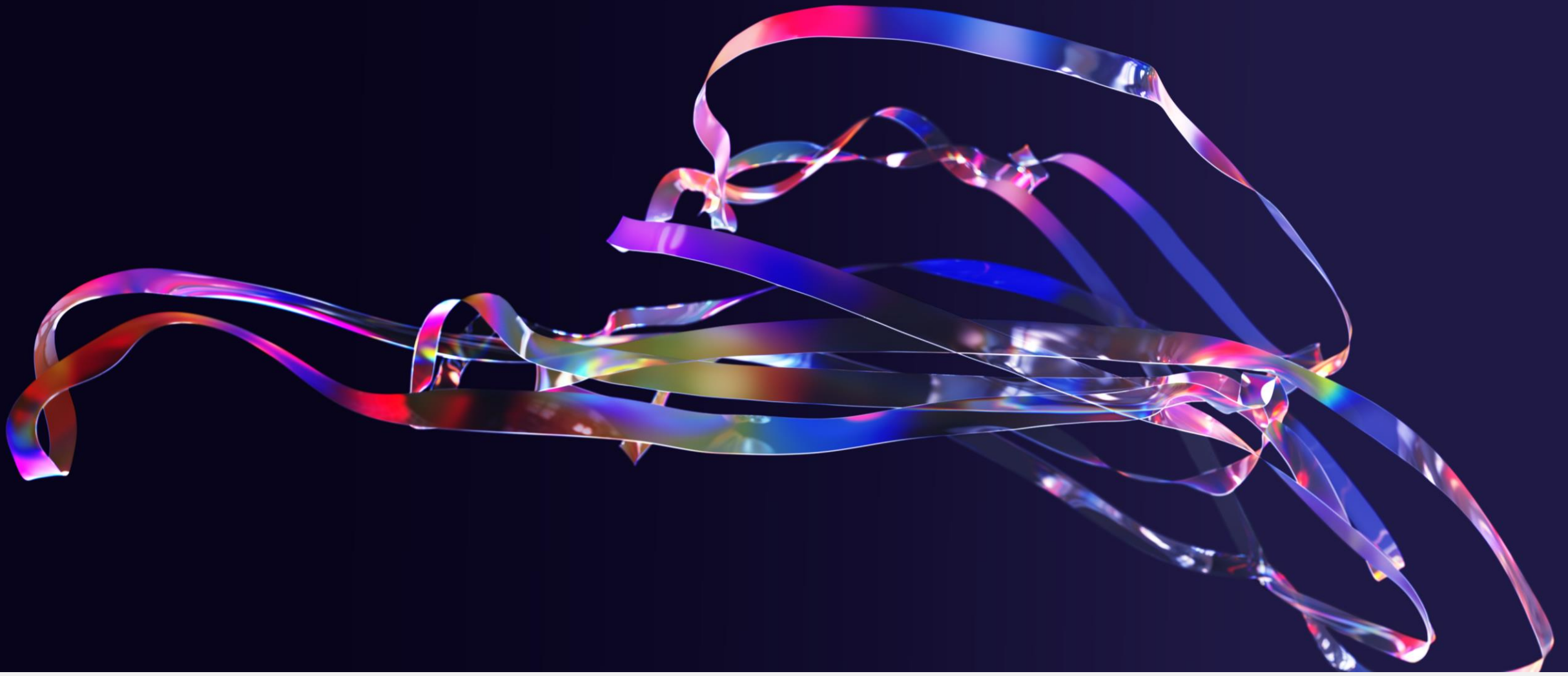
# Arbiters, Encephalons, Mavens, and Pathers

## Employee Positions

# Introduction

- Corporate employees
- Non-corporate employees
- Vendors
- Suppliers
- In-Between





Arbiter

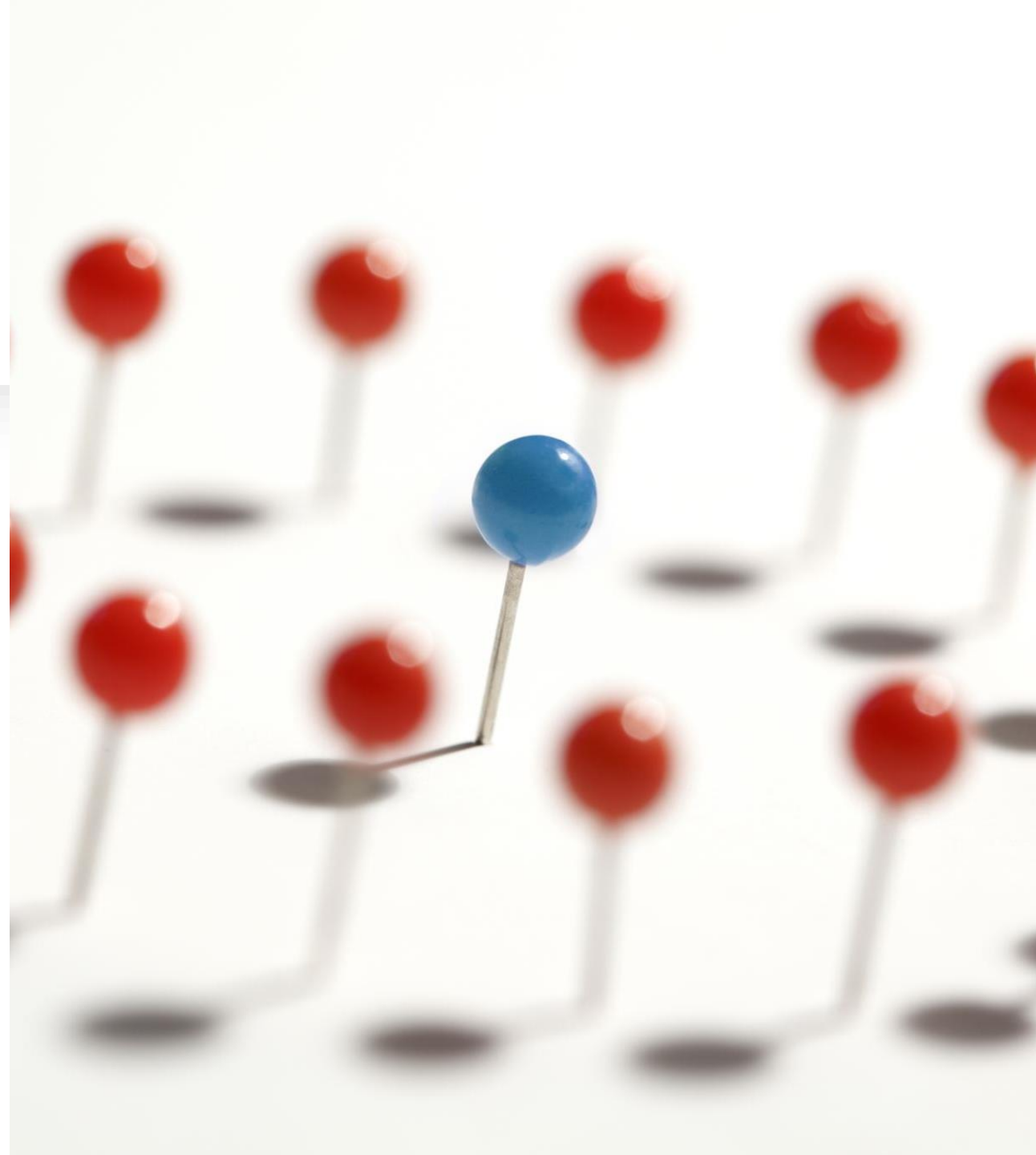


Arbiter

# What is an Arbiter?

---

- An overseer of non-corporate employees such as mavens, encephalons, pathers, and others who fall under the eonteon umbrella.



# Job duties

- Ensure excellent customer service criteria is in use
- Monitors company metrics and ensure metrics are being achieved
- Carries out disciplinary processes



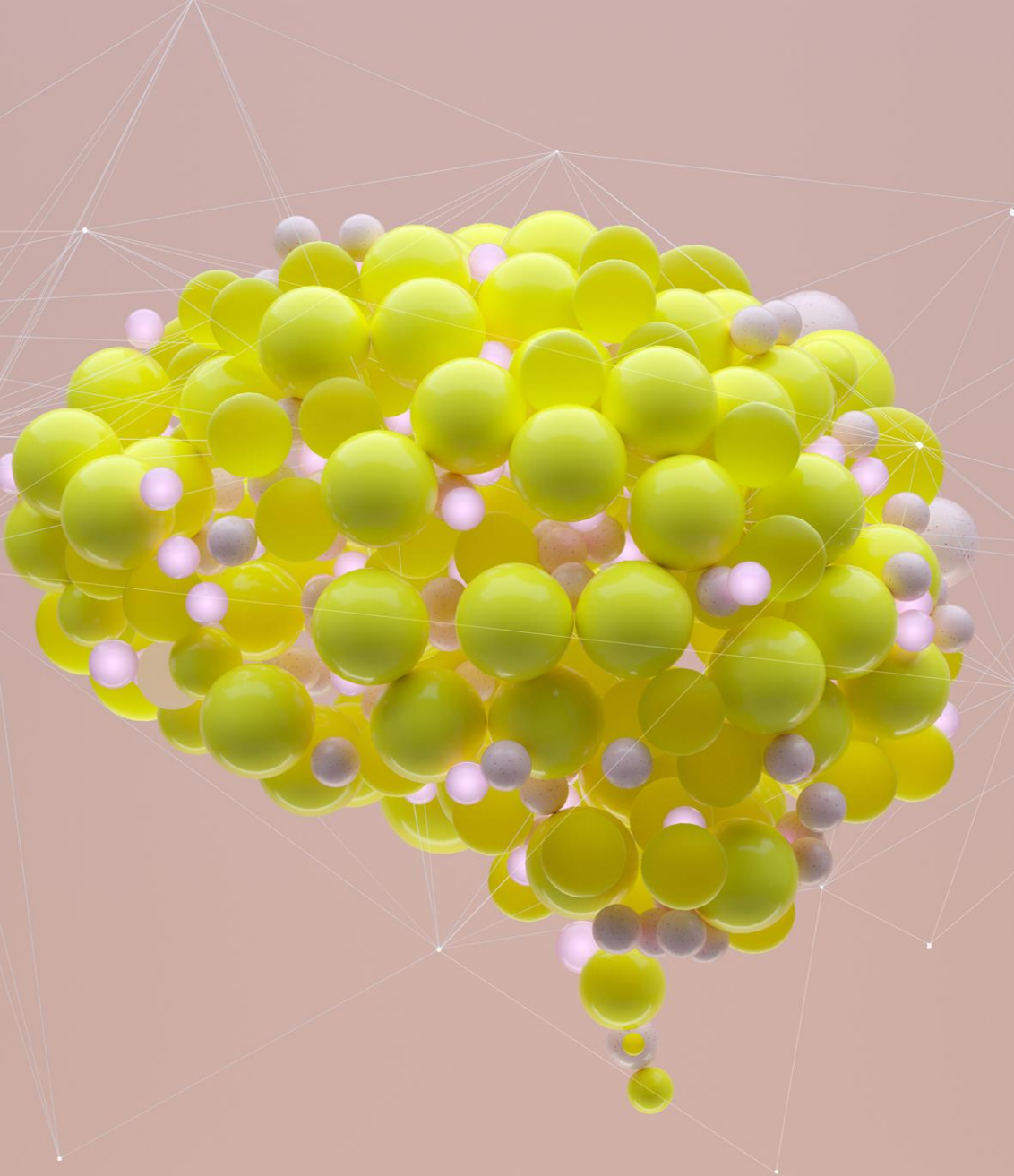


# Encephalons



Encephalon





# What is an Encephalon?

- Gather, analyze, and clean information from users
- Provides Mavens with information
- Provides Pathers with information

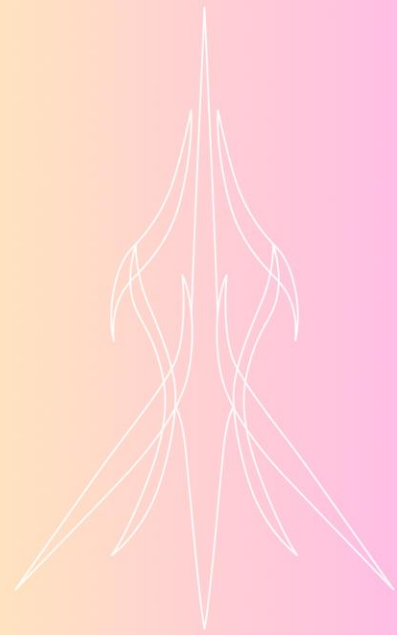


# Job duties

- Provide corporate with up-to-date user information
- Provide users with information
- Provide non-corporate employees with information



Mavens



Maven



# What is a Maven?

- Direct-to-User interactions
- Assists and directs user
- Focuses on user experience



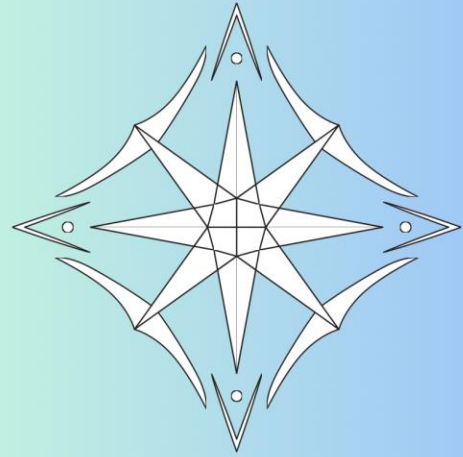
# Job duties

---

- Ensure user experience is excellent
- Monitor and analyze user interactions
- Provide detailed reporting
- Utilize information provide by encephalons



Pathers



Pather

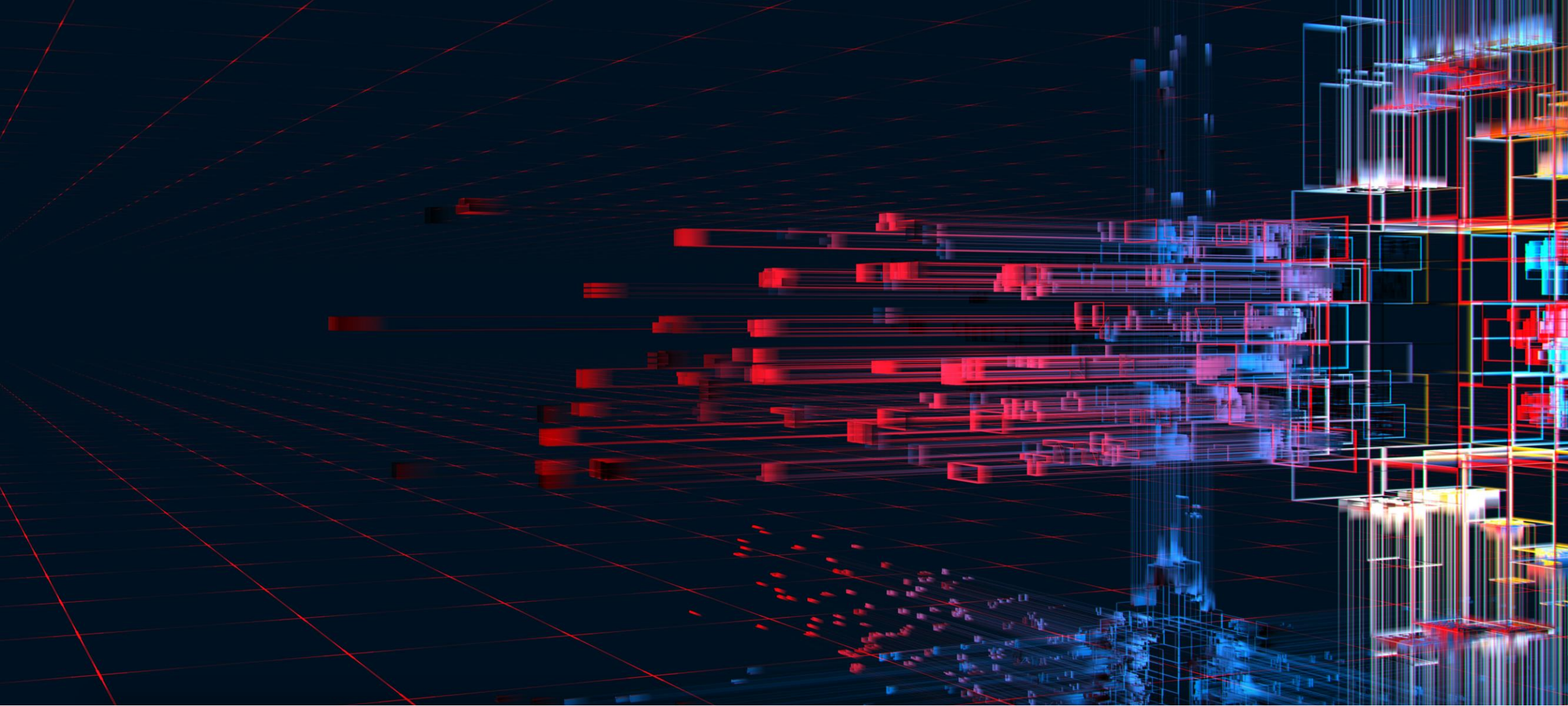


# What is a Pather?

- Utilizes the information provides by Motifs and Echo-Spheres to provide the most optimal path for success for a user

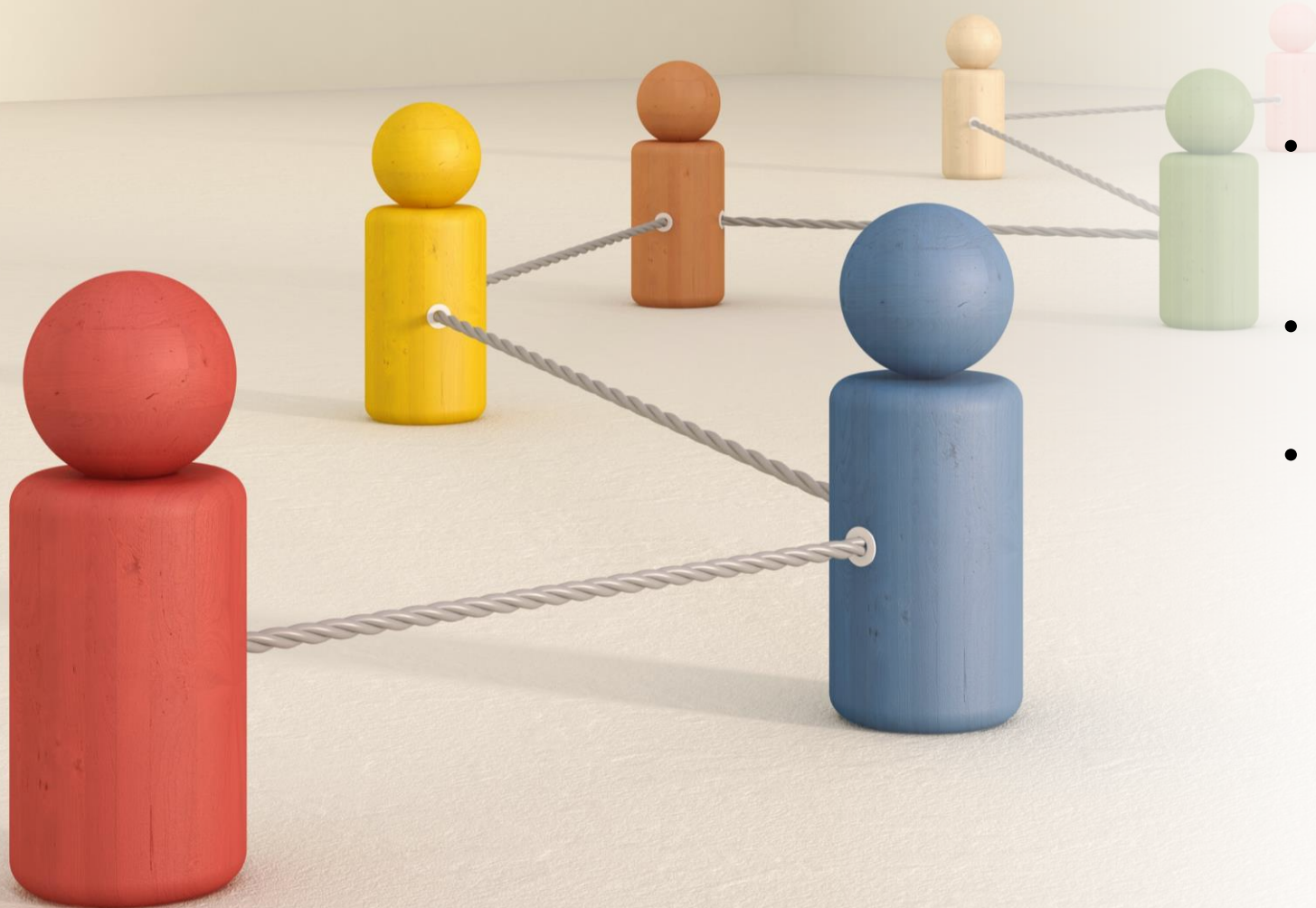
# Job duties

- Utilize the algorithms corporate provides
- Create and implement structures
- Met all corporate metrics



# Relationships

# Working Together



- Encephalons provide the information to the mavens and Pathers
- Pathers provide information to the mavens
- Mavens carry out the directives



# Summary

- Non-corporate employees are the face of the company.
- Each position works to help the other position accomplish their company metrics
- Some positions will come and go.